

SOUTH BY SOUTH WEST

Wendy McBride

Richard Stanley

AT WHITE SPACE ART

5 - 19 JUNE 2010

PRIVATE VIEW

FRIDAY 4 JUNE

WINE SERVED 6-8PM

whitespaceart.com

*All works available to purchase on receipt
of this brochure. Please call the gallery on
01803 864088.*

*The paintings on these pages
represent only part of the exhibition.*

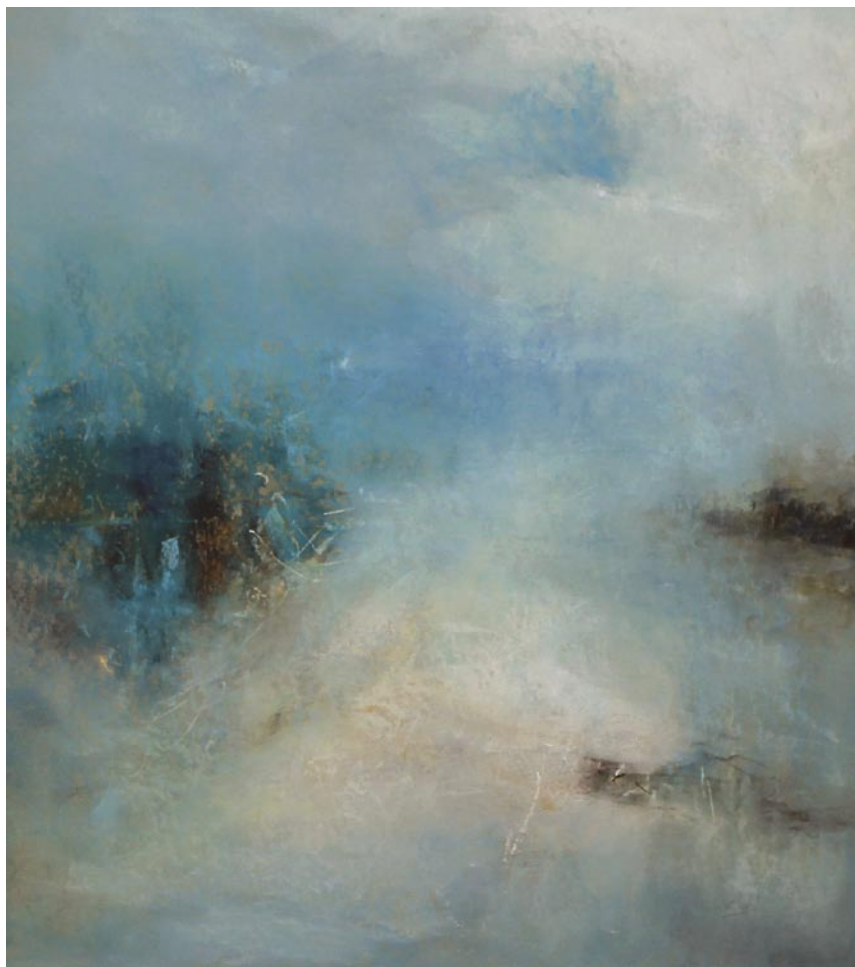
*Full exhibition and artists' cvs online at
whitespaceart.com*

WENDY McBRIDE



“For much of my life I have lived in the West Country, amid the weather and shifting seasons. Nothing is fixed here, not for a day, not for an hour. But somehow, particular encounters with the natural world get stuck in my mind, and I think this is where the pictures begin.”

“Back in the studio, the memory gets mixed up with mood and imagination and the scrape of chalk on board, so that I never quite know what will happen while the picture takes shape. I use pastels both for their translucent qualities, and because I like to work quickly. Degas was an early love, and Turner. Joan Eardley is a constant inspiration, as is Barbara Rae.”



I. SEA FRET
pastel 60cm x 55cm



2. ABBEY GARDEN, TRESCO
pastel 48cm x 48cm

3. RAGGY GARDEN
pastel 32cm x 32cm



4. SEVENTH WAVE
pastel 60cm x 55cm



5. MORNING AND BIRDS
pastel 52cm x 40cm



6. ADRIFT
pastel 32cm x 32cm



7. WINTER LIGHT, ERME ESTUARY
pastel 32cm x 32cm



8. PORTHMEOR SURF
pastel 31cm x 41cm



9. RIVER SONGS I
pastel 25cm x 25cm

10. RIVER SONGS II
pastel 25cm x 25cm



11. IN BETWEEN
pastel 60cm x 55cm

RICHARD STANLEY



“The West Country is the essence of my work, this beautiful, ever-changing landscape of rolling hills, valleys and pastureland. Turquoise seas, crashing waves and hedgerows, the fresh air, open space; living in such a diverse part of the world has had a huge impact on me as an artist.”

“The landscape is always changing, every day something new to paint, changing weather, light, seasons. You could paint the same scene hundreds of times and no two would be the same. I draw inspiration from the colours around me; I enjoy experimenting with mark making and surface texture, applying paint in a manner that captures the landscape.”



12. AMONG THE FOXGLOVES, PINK CAMPION AND SUNSHINE, BANTHAM
mixed media on paper 54cm x 73cm



13. CORNISH GORSE HEDGE
oil on paper 30cm x 44cm



14. SUNLIGHT ON THE WATER, TOWARDS BRYHER FROM TRESCO
oil on paper 50cm x 52cm



15. SIZZLING HOT DAY, SAUNTUN BEACH HUTS
oil on paper 46cm x 60cm

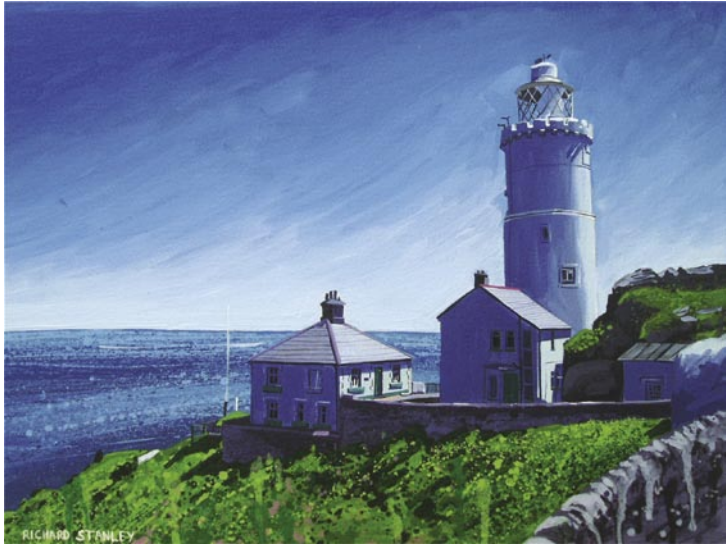


16. WALKING UP THE TRESKO TIDELINE
mixed media on paper 43cm x 45cm



17. DEVON GORSE, BIRDS TWITTER
mixed media on paper 32cm x 32cm

18. THROUGH THE GRASSES, ST MICHAEL'S MOUNT
mixed media on paper 25cm x 32cm



19. BLUE SKY, START POINT LIGHTHOUSE
oil on paper 32cm x 43cm

20. THE SUN FALLS BEHIND BRYHER, FROM NEW GRIMSBY
oil on paper 38cm x 55cm



21. BANTHAM CLIFFS
oil on paper 47cm x 47cm



22. EVENING LIGHT, RUSHY PORTH, TOWARDS ST MARTINS
mixed media on paper 55cm x 56cm

