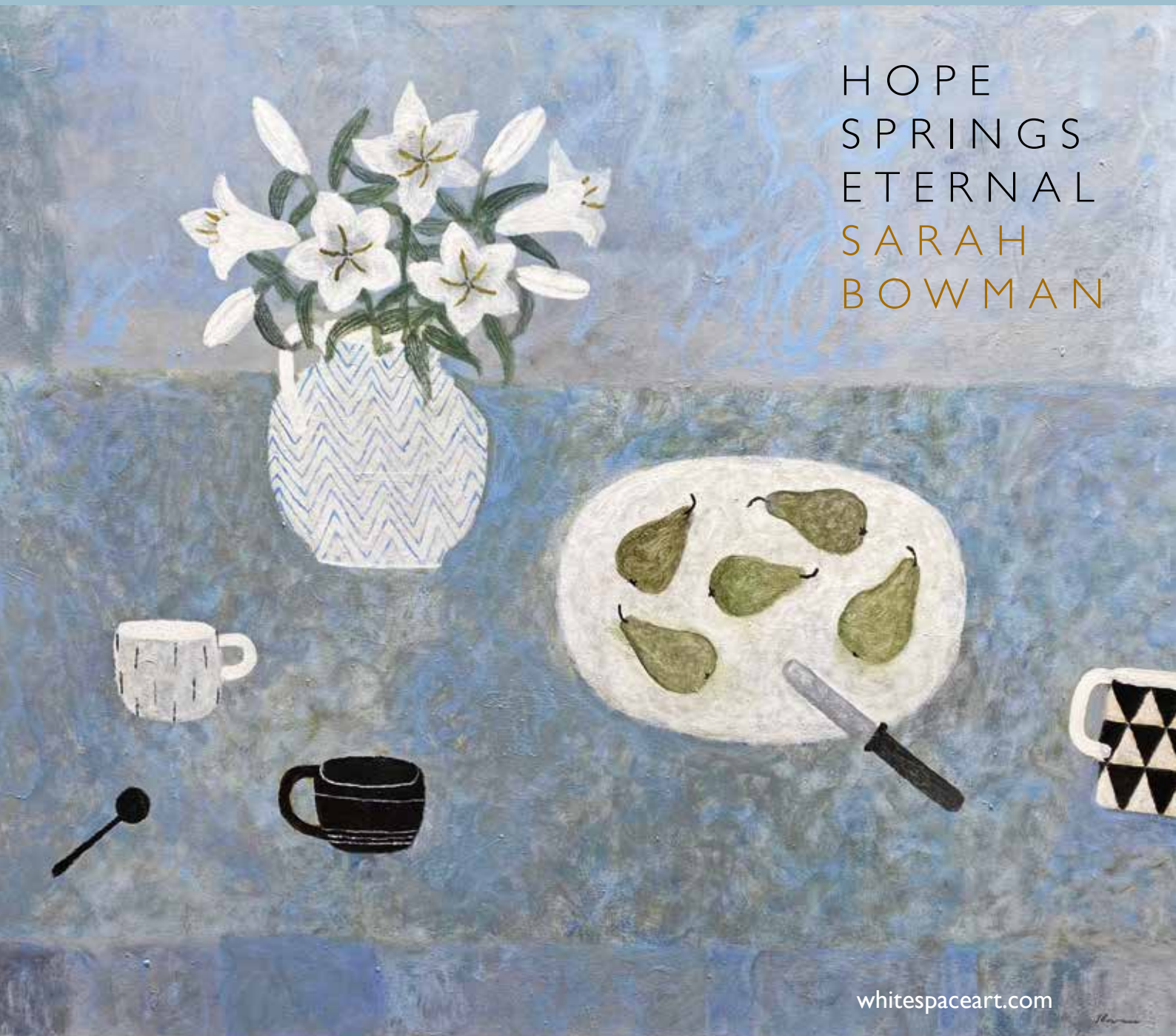


HOPE
SPRINGS
ETERNAL
SARAH
BOWMAN



HOPE
SPRINGS
ETERNAL
SARAH
BOWMAN

24 April to 15 May 2021
at White Space Art, Totnes

view exhibition online
whitespaceart.com



Making art affordable.
Spread the cost with an
interest free loan from ownart.
Representative 0% APR



1 (cover)
The Blue Table
 oil on canvas 100 x 120cms

2
View to the Sea, Mallorca
 oil on canvas 90 x 70cms

INTRODUCTION

I'll look back on this collection of paintings as a gift from a turbulent time, where moments of creating them were a safe harbour from the reality of what was happening in the world.

I've often talked of how my depictions through the window are an escapism to imaginary or remembered views, either at home or abroad, that evolve and transport me to a place other than now. I've never felt a need to transport myself to them so strongly.

This stagnated time has given us all an opportunity to reflect and appreciate moments of sanctuary in nature. I try to transfer that into these paintings.

I have entitled this exhibition *Hope Springs Eternal*. Spring is always my favourite time of year with the renewing and unfurling from the darkness of winter; bringing hope and with that joy. Something we all could use in abundance at this moment.





3
Catch of the Day, Anemones
oil on canvas 52 x 81 cms



4

The Beekeepers

oil on board 58 x 81cms



5

Summer Garden

oil on board 70 x 58cms



6

Sharing is Caring

oil on board 33 x 42cms



7

Spring in Abundance

oil on board 56 x 72cms

8

Anemones & Pears

oil on canvas 100 x 120cms





9

They Lit The Fires

oil on board 45 x 50cms



10

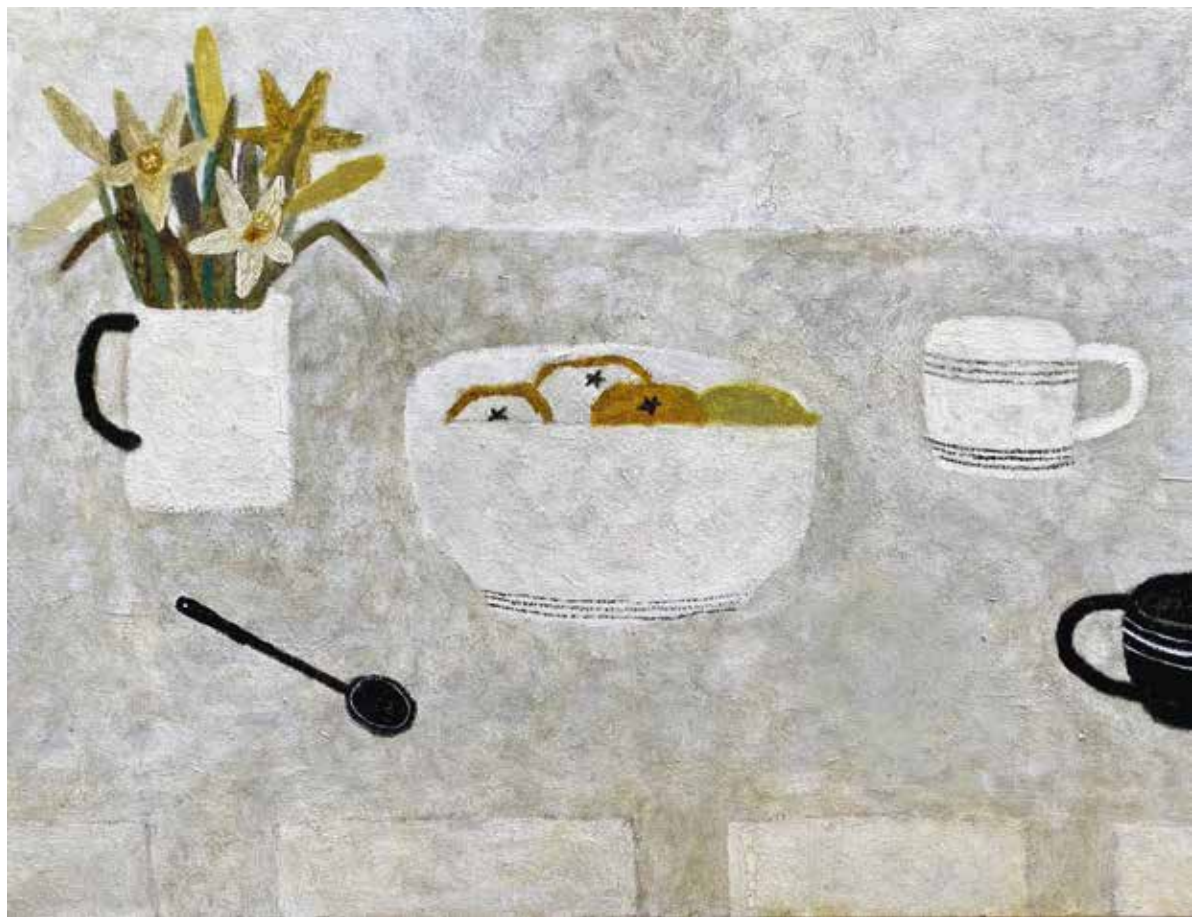
Paper Whites & Cornish Jug

oil on board 54 x 69cms

11

Daffodils & Oranges

oil on canvas 60 x 80cms





12
Summer Delicates
 oil on board 31 x 29cms



13
Spring Treasures
 oil on board 33 x 30cms



14
Joy of Spring
 oil on board 32 x 31cms



15
Spring Pickings
 oil on board 33 x 32cms



16
Spring Light, Dartmoor
 oil on board 32 x 34cms



17
Spring Light, Dartmoor II
 oil on board 32 x 34cms



18
Spring Light, Dartmoor III
 oil on board 34 x 39cms



19
Spring Light, The Sea
 oil on board 32 x 35cms

20

Lilies & Oranges

oil on board 57 x 73cms



21

Tulips with Ship in a Bottle

oil on board 51 × 81cms





22

Sweet Peas & Sunflowers

oil on board 36 x 42cms



23

Green Pastures

oil on board 55 x 81 cms



24

Snowdrops, Harbour

oil on board 36 x 48cms



25

Summer Posy, Harbour

oil on board 58 x 82cms



26

A New Day

oil on board 34 x 39cms



27

Blackbird

oil on board 33 x 52cms



28

Rooftops, Breezy Day

oil on board 38 x 47cms



29

Lily of the Valley & Mochaware

oil on board 42 x 53cms



30

Picking Lemons

oil on board 38 x 44cms



31

Orange Grove

oil on board 37 x 39cms



S A R A H B O W M A N

Sarah was born in 1975. She grew up in Dorchester and studied at Wimbledon and Falmouth Art College. After living and working in Edinburgh for a few years, she moved to Devon in 2002. She set up White Space Art with her husband in 2003 in Totnes. Sarah lives with her family on the edge of Dartmoor.

Education

1997 BA Hons Fine Art, Falmouth Art School

Solo exhibitions

2019 The Art of Simplicity, White Space Art
 2017 To The Lighthouse, White Space Art
 2015 The Birds and the Bees and Other Subjects
 White Space Art
 2012 The Rite of Spring, White Space Art
 2010 Wren Gallery, Burford
 2010 Ainscough Contemporary Art, Chelsea, London
 2009 Moments of Being, White Space Art, Totnes
 2008 Wren Gallery, Burford
 2008 Ainscough Contemporary Art, Chelsea, London
 2007 White Space Art, Totnes
 2006 Room With a View, White Space Art
 2005 Ainscough Contemporary Art, Chelsea, London
 2004 Inside Out, Ainscough Contemporary Art

Selected mixed exhibitions

2018- Byard Art, Cambridge
 2018 50th Anniversary, Thackeray Gallery
 2017- Cricket Fine Art, Hungerford & Chelsea
 2012- Summer & Autumn Exhibition, Josie Eastwood
 2011-13 Russell Gallery, London
 2011 Autumn Exhibition, Moncrieff Gallery
 2009 The Glory of the Garden, Moncrieff Bray Gallery
 2009 Essentially English Exhibition, Wren Gallery
 2008 Autumn Exhibition, Josie Eastwood, Winchester
 2008-10 Royal West of England Academy Open Painting
 2007 'Spring' Josie Eastwood, Winchester
 2007 Two Person Show, New Grafton, Barnes
 2006 Royal Academy Summer Exhibition (3 paintings)
 2006 Art From Cornwall, New Grafton Gallery, Barnes
 2006-11 Bircham Gallery, Holt
 2006-08 Gallery Tresco, Isles of Scilly
 2005 'Coastlines', Two Person Show
 Beside The Wave, Falmouth, Cornwall
 2005 Essentially English Exhibition, Wren Gallery
 2005 Royal Academy Summer Exhibition
 2005 Royal West of England Academy Open Painting
 2004-08 The Wykeham Gallery, Stockbridge, Hampshire
 2004-07 Beside The Wave, Falmouth, Cornwall
 2004 Easter Exhibition, Wren Gallery, Burford
 2003-13 Ainscough Contemporary Art, Chelsea, London
 2003- White Space Art, Totnes, Devon
 2002-06 Pierrepont Gallery, Bridport, Dorset
 2002 Lemon Street Gallery, Truro
 2002-04 Broadway Modern Gallery, Broadway

Art Fairs

2020 Connect Art Fair, Mall Galleries
 2018- Affordable Art Fair, New York, Carina Haslam
 2012-16 20/21 International Art Fair, Royal College of Art
 2011-13 Works on Paper, Kensington
 2011-17 Chelsea Art Fair
 2011-19 Affordable Art Fair, Hampstead
 2007-09 Art London
 2006-16 Affordable Art Fair, Bristol
 2002- Affordable Art Fair, Battersea



32

Morning Chorus

oil on board 50 x 45cms

Published by White Space Art, Totnes to accompany the exhibition
Hope Springs Eternal, 24 April-15 May 2021
© White Space Art & Sarah Bowman, all rights reserved



33
Wild Flowers, Dartmoor
oil on board 36 x 50cms